



Test Report

Report No.: HLF1403090E

Report Date: 2014-3-10

Page: 1 of 4

Company Name : Leading Sponge Limited

Address : Shadun Industrial Areas, Zengbu, Chashan Town, Dongguan, Guangdong, China

The following sample information was Submitted and Identified by the Client:

Sample Name : Activated carbon filter sponge

Sample model : /

Sample Lot : /

Receiving Date : 2014-3-6

Complete Date : 2014-3-10

Test Requested : As specified by client, Determine the content of Pb、Cd、Hg、Cr6+、PBBs、PBDEs in the submitted sample

Test Method : Refer to IEC62321:2008

Test Results : Please refer to next page

Test Conclusion : Based on the test of sample, the test results comply with the Limits as set by RoHS Directive 2011/65 / EU Annex. II

Prepared by:

Cathy

Report Clerk

Checked by:

Mary

Lab Senior Engineer

Approved by:

Eric

Lab Supervisor

In no circumstances shall the Company's responsibility extend beyond inspection, testing and reporting upon the samples actually drawn from the bulk and inspected, tested and surveyed by the Company and any inference to be drawn from the results of such inspection or survey or testing shall be entirely in the discretion and at the sole and exclusive responsibility of the Principal. This test report cannot be reproduced except in full.



FLION TESTING SERVICE

Add: Gangzi Industrial Park, Furong Industrial Area, Xinqiao Village, Shajing Town, Bao'an District, Shenzhen City

Tel: 86-0755-2724 8885

Fax: 86-0755-2746 0090

Http://www.sz-fts.com

Test Report

Report No.: HLF1403090E

Report Date: 2014-3-10

Page: 2 of 4

Test Result:

Test Item	Test Method / Instrument	Unit	MDL	Result (A)	Limit
Lead(Pb)	IEC62321:2008/ICP-OES	ppm	2	N.D.	1000
Cadmium(Cd)	IEC62321:2008/ICP-OES	ppm	2	N.D.	100
Mercury(Hg)	IEC62321:2008/ICP-OES	ppm	2	N.D.	1000
Hexavalent Chromium(CrVI)	IEC62321:2008/UV-VIS	ppm	2	N.D.	1000
Sum of PBBs		ppm	-	N.D.	1000
Monobromobiphenyl	IEC62321:2008/GC-MS	ppm	5	N.D.	-
Dibromobiphenyl	IEC62321:2008/GC-MS	ppm	5	N.D.	-
Tribromobiphenyl	IEC62321:2008/GC-MS	ppm	5	N.D.	-
Tetrabromobiphenyl	IEC62321:2008/GC-MS	ppm	5	N.D.	-
Pentabromobiphenyl	IEC62321:2008/GC-MS	ppm	5	N.D.	-
Hexabromobiphenyl	IEC62321:2008/GC-MS	ppm	5	N.D.	-
Heptabromobiphenyl	IEC62321:2008/GC-MS	ppm	5	N.D.	-
Octabromobiphenyl	IEC62321:2008/GC-MS	ppm	5	N.D.	-
Nonabromobiphenyl	IEC62321:2008/GC-MS	ppm	5	N.D.	-
Decabromobiphenyl	IEC62321:2008/GC-MS	ppm	5	N.D.	-
Sum of PBDEs		ppm	-	N.D.	1000
Monobromodiphenyl ether	IEC62321:2008/GC-MS	ppm	5	N.D.	-
Dibromodiphenyl ether	IEC62321:2008/GC-MS	ppm	5	N.D.	-
Tribromodiphenyl ether	IEC62321:2008/GC-MS	ppm	5	N.D.	-
Tetrabromodiphenyl ether	IEC62321:2008/GC-MS	ppm	5	N.D.	-
Pentabromodiphenyl ether	IEC62321:2008/GC-MS	ppm	5	N.D.	-
Hexabromodiphenyl ether	IEC62321:2008/GC-MS	ppm	5	N.D.	-
Heptabromodiphenyl ether	IEC62321:2008/GC-MS	ppm	5	N.D.	-
Octabromodiphenyl ether	IEC62321:2008/GC-MS	ppm	5	N.D.	-
Nonabromodiphenyl ether	IEC62321:2008/GC-MS	ppm	5	N.D.	-
Decabromodiphenyl ether	IEC62321:2008/GC-MS	ppm	5	N.D.	-

Note: 1.1ppm=1mg/kg=0.0001%; 2.N.D.=Not Detected(<MDL);

3.MDL=Method Detection Limit; 4.“-”=Not Regulated;

In no circumstances shall the Company's responsibility extend beyond inspection, testing and reporting upon the samples actually drawn from the bulk and inspected, tested and surveyed by the Company and any inference to be drawn from the results of such inspection or survey or testing shall be entirely in the discretion and at the sole and exclusive responsibility of the Principal. This test report cannot be reproduced except in full.



FLION TESTING SERVICE

Add: Gangzi Industrial Park, Furong Industrial Area, Xinqiao Village, Shajing Town, Bao'an District, Shenzhen City

Tel: 86-0755-2724 8885

Fax: 86-0755-2746 0090

Http://www.sz-fts.com

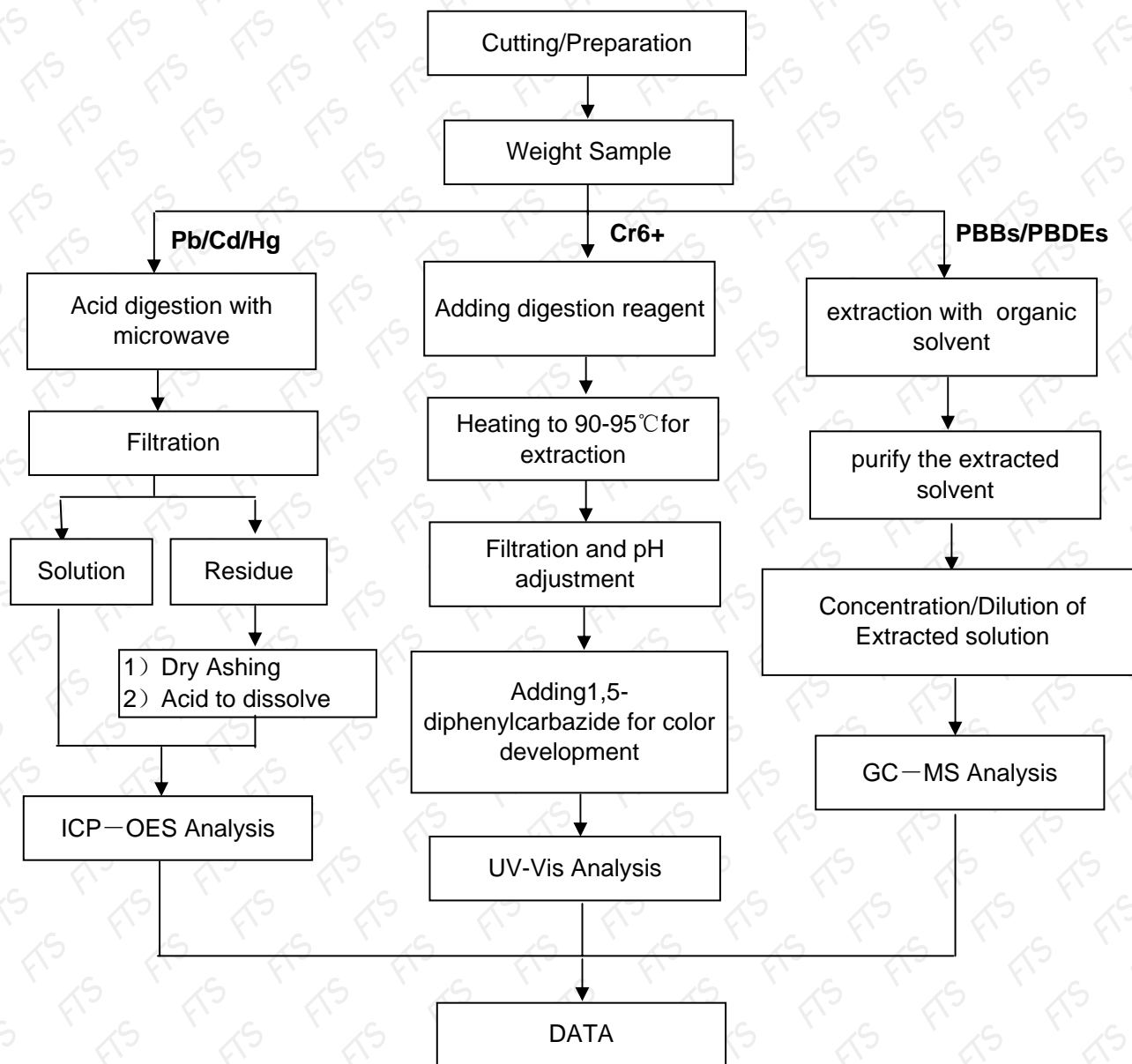
Test Report

Report No.: HLF1403090E

Report Date: 2014-3-10

Page: 3 of 4

Testing Flow Chart:



In no circumstances shall the Company's responsibility extend beyond inspection, testing and reporting upon the samples actually drawn from the bulk and inspected, tested and surveyed by the Company and any inference to be drawn from the results of such inspection or survey or testing shall be entirely in the discretion and at the sole and exclusive responsibility of the Principal. This test report cannot be reproduced except in full.



FLION TESTING SERVICE

Add: Gangzi Industrial Park, Furong Industrial Area, Xinqiao Village, Shajing Town, Bao'an District, Shenzhen City

Tel: 86-0755-2724 8885

Fax: 86-0755-2746 0090

Http://www.sz-fts.com

Test Report

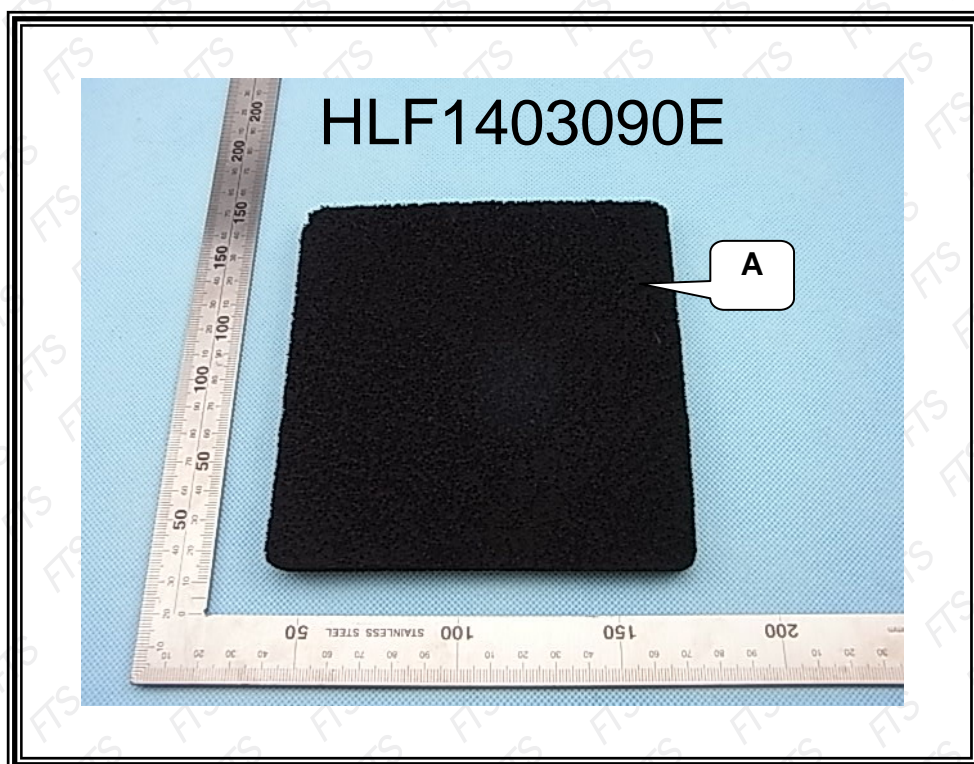
Report No.: HLF1403090E

Report Date: 2014-3-10

Page: 4 of 4

Sample Description: A: sponge

Sample photo:



Note: The results show in this report is only responsible for the sample. The test report shall not be reproduced except in full, without written approval of the laboratory.

***** End of the report *****

In no circumstances shall the Company's responsibility extend beyond inspection, testing and reporting upon the samples actually drawn from the bulk and inspected, tested and surveyed by the Company and any inference to be drawn from the results of such inspection or survey or testing shall be entirely in the discretion and at the sole and exclusive responsibility of the Principal. This test report cannot be reproduced except in full.



FLION TESTING SERVICE

Add: Gangzi Industrial Park, Furong Industrial Area, Xinqiao Village, Shajing Town, Bao'an District, Shenzhen City

Tel: 86-0755-2724 8885

Fax: 86-0755-2746 0090

Http://www.sz-fts.com